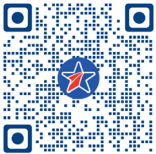


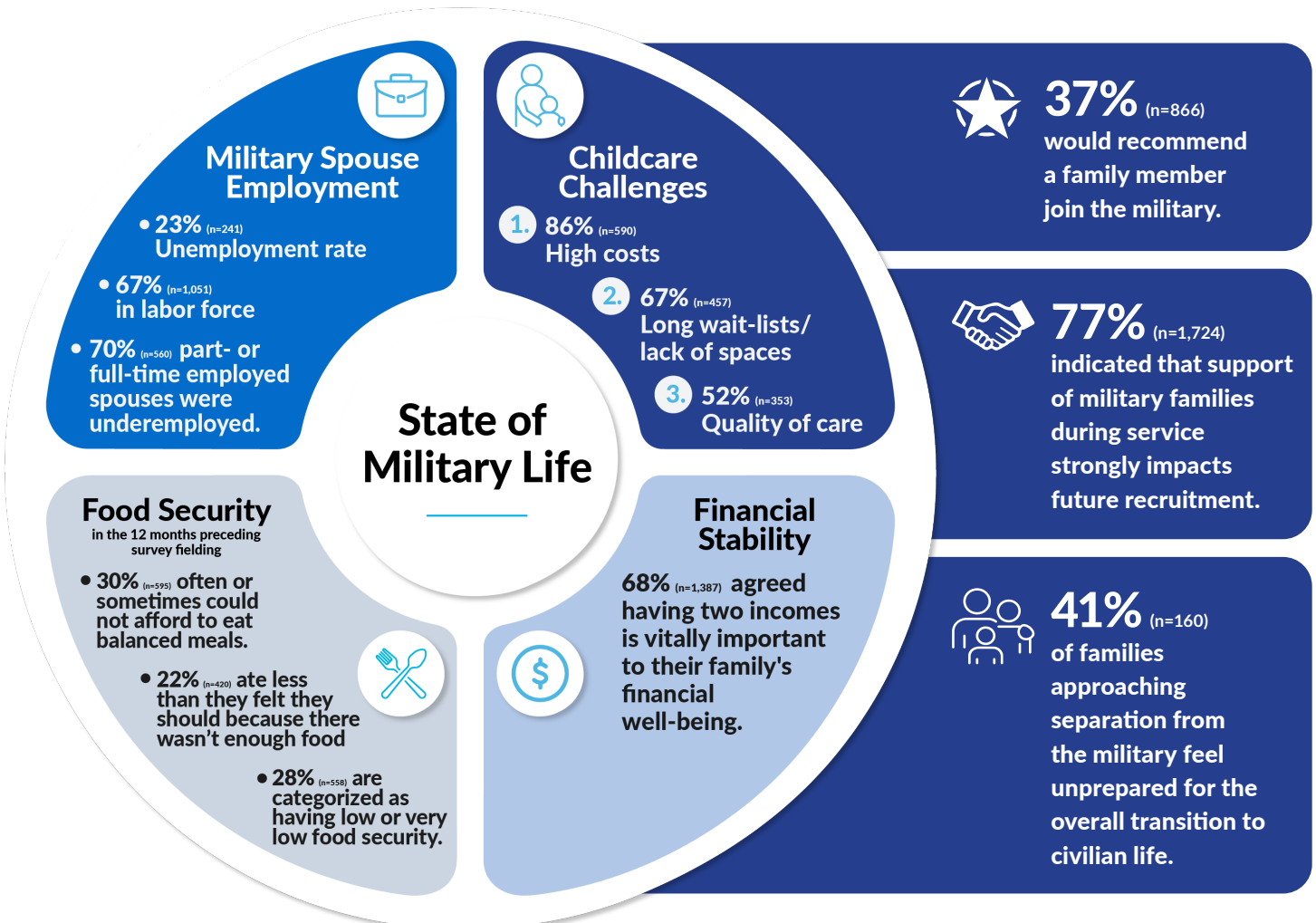
# Key Takeaways

Active-Duty Family Respondents<sup>1</sup>



Since 2009, the Blue Star Families Military Family Lifestyle Survey (MFLS) has collected responses annually from military families addressing issues related to housing, financial security, employment, food insecurity, healthcare, childcare, and community belonging. The 2025 MFLS heard from more than 6,000 military-connected respondents, including 2,608 active-duty family respondents: 15% (n=401) active-duty service members and 85% (n=2,207) spouses/domestic partners of active-duty service members.

We are deeply grateful to our sponsors: AARP, Chobani, Lockheed Martin Corporation, Macy's, Inc., and USAA for their generous support of the 2025 Military Family Lifestyle Survey (MFLS). We also want to extend our heartfelt thanks to The BlackRock Foundation, Craig Newmark Philanthropies, CSX Transportation, and the Patrick J. McGovern Foundation for their ongoing support of Blue Star Families as a whole. Your contributions enable us to continue serving military families with impactful programs and research year-round.



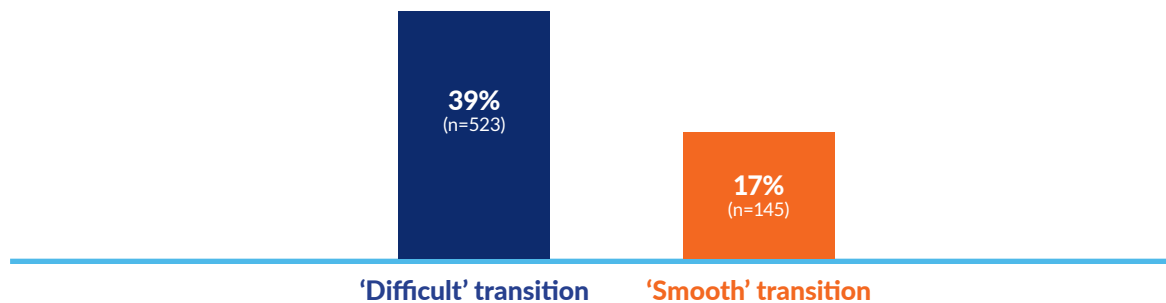
<sup>1</sup> Unless otherwise noted, all data points reference active-duty family respondents, here defined as respondents who selected "Active-Duty Service Member" or "Spouse/Domestic Partner of Active-Duty Service Member" as their primary current military affiliation.

**Table 1. Perceptions of Local Support, Public Support, and Service Differ by Belonging**  
Active-Duty Family Respondents

Of those who felt a sense of belonging to their community <sup>2</sup>		Of those who did NOT feel a sense of belonging to their community <sup>3</sup>
71% (n=769)	Agreed <sup>4</sup> that neighbors in their <b>local community truly appreciate the sacrifices</b> made by local service members, veterans, and their families alike	32% (n=266)
53% (n=576)	Agreed that neighbors in their <b>local community would be prepared to support</b> local military families if the U.S. engaged in a major conflict	16% (n=113)
45% (n=481)	Would <b>recommend</b> that a young family member join the military	26% (n=184)
56% (n=606)	Were <b>satisfied</b> with the military way of life	29% (n=203)
46% (n=493)	Were <b>confident</b> military families will receive the long-term support they need <sup>5</sup>	25% (n=178)



**Proportion of veteran family respondents who were “just getting by” or “finding it difficult to get by” financially**



<sup>2</sup> Those who reported a sense of belonging to their local community are defined as those who selected “strongly agree,” “agree,” or “somewhat agree” with the statement “I feel a sense of belonging to my local community.”  
<sup>3</sup> Those who did not report a sense of belonging to their local community are defined as those who selected “strongly disagree,” “disagree,” or “somewhat agree” to the statement “I feel a sense of belonging to my local community.”  
<sup>4</sup> ‘Agree’ is defined as those respondents who selected “somewhat agree,” “agree,” or “strongly agree.”  
<sup>5</sup> ‘Were confident’ is defined as those respondents who selected “very confident – support will strengthen and adapt over time” or “somewhat confident – support exists, but I worry about future commitment.”